



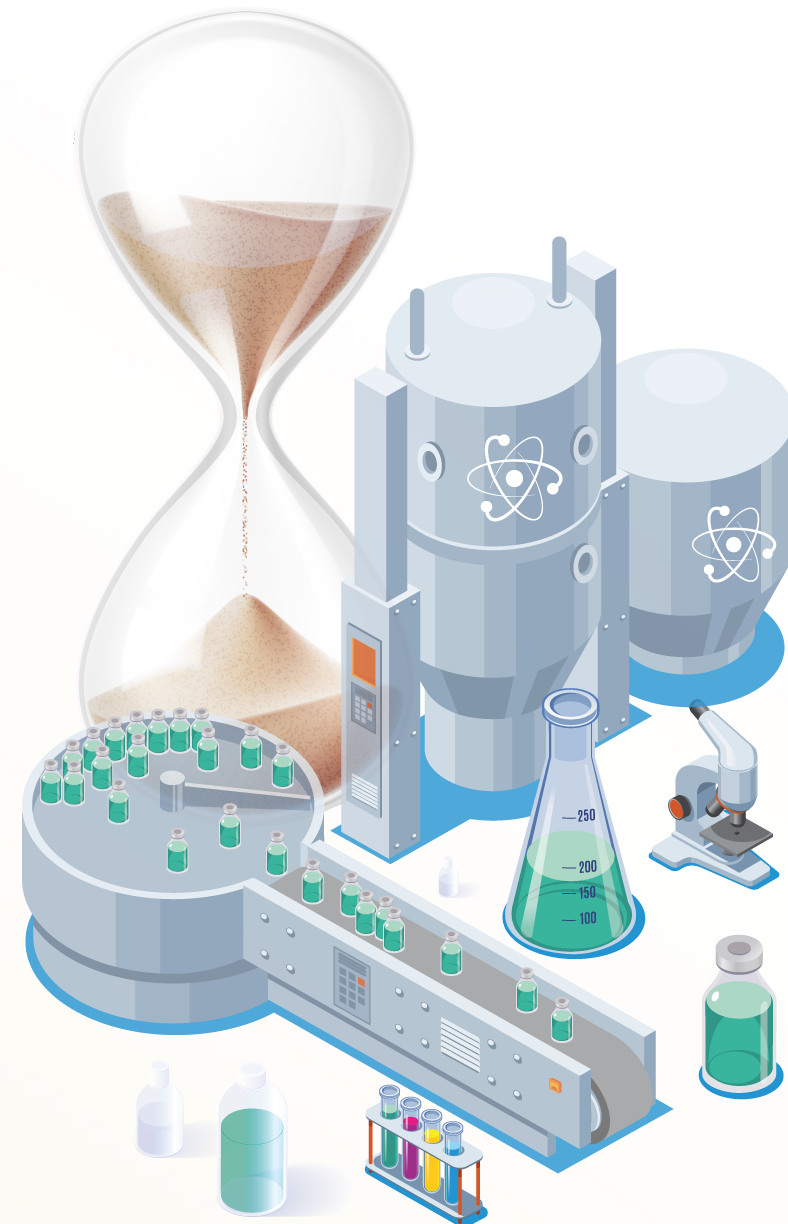
# NUCLEAR MEDICINE EUROPE

the industry association

The **production of radiopharmaceuticals** is complex due to the relatively **short half lives** of the isotopes (hours to a few days)

Often ordered on one day, produced that same day, delivered next morning and used in hospital during the day (24 hours)

The requested and implemented use of low enriched uranium has led to **more radioactive waste** and **considerable cost increase**



The **transport of isotopes**  
is subject to strict regulations  
and often has to go with airfreight  
(COVID and BREXIT impact on available flights)

Just in Time



Several of the currently  
used research reactors  
**Are nearing the end of  
their life span** and will  
need to be replaced  
(projects currently underway)



There is a **considerable cost impact** due to the need for full cost recovery (OECD) by the irradiators which means **no more subsidizing by local governments** (in fact subsidizing Nuclear Medicine in other countries) but on the receiving end the reimbursement for the end products was not adapted and producers are squeezed in the middle



